

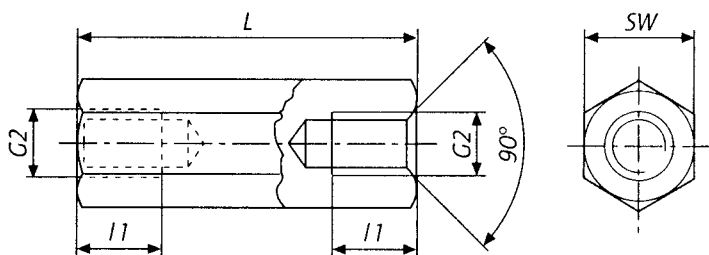
ABSTANDSBOLZEN

DISTANCE BOLT / VISSERIES

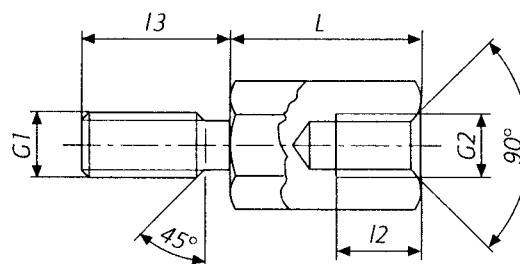
Abstandsbolzen / distance bolt / visseries

Werkstoff: **Stahl, verzinkt**

II Innen-/ Innengewinde



IA Innen-/ Außengewinde



L (mm)	l1 (mm)	l2 (mm)	G1 = G2	l3 (mm)
5	L	3	M 3	6
8	L	5	M 4	8
10	L	6	M 5	8
12	L	7	M 6	10
15	L	10		
18	9	10	Fertigungstoleranz	
ab 20	10	10	+/-0,1 mm	

Ausführung	Material	SW (6-kant)	Gewinde	Standardlängen in mm
II	Stahl	SW 5,5	M 3	5, 8, 10, 12, 15, 18, 20, 30, 35, 40, 45, 50, 55, 60, 65, 70
II	Stahl	SW 6	M 3	5, 8, 10, 12, 15, 18, 20, 30, 35, 40, 45, 50, 55, 60, 65, 70, 75, 80, 85, 90, 95, 100
II	Stahl	SW 7	M 4	5, 8, 10, 12, 15, 18, 20, 30, 35, 40, 45, 50, 55, 60, 65, 70, 75, 80, 85, 90, 95, 100
II	Stahl	SW 8	M 4	5, 8, 10, 12, 15, 18, 20, 30, 35, 40, 45, 50, 55, 60, 65, 70, 75, 80, 85, 90, 95, 100
II	Stahl	SW 8	M 5	8, 10, 12, 15, 18, 20, 30, 35, 40, 45, 50, 55, 60, 65, 70, 75, 80, 85, 90, 95, 100
II	Stahl	SW 10	M 6	10, 12, 15, 18, 20, 30, 35, 40, 45, 50, 55, 60, 65, 70, 75, 80, 85, 90, 95, 100
II	Stahl	SW 13	M 8	15, 20, 30, 35, 40, 45, 50, 60, 70, 80, 90, 100

Ausführung	Material	SW (6-kant)	Gewinde	Standardlängen in mm
IA	Stahl	SW 5,5	M 3	5, 8, 10, 12, 15, 18, 20, 30, 35, 40, 45, 50, 55, 60, 65, 70
IA	Stahl	SW 6	M 3	5, 8, 10, 12, 15, 18, 20, 30, 35, 40, 45, 50, 55, 60, 65, 70, 75, 80, 85, 90, 95, 100
IA	Stahl	SW 7	M 4	5, 8, 10, 12, 15, 18, 20, 30, 35, 40, 45, 50, 55, 60, 65, 70, 75, 80, 85, 90, 95, 100
IA	Stahl	SW 8	M 4	5, 8, 10, 12, 15, 18, 20, 30, 35, 40, 45, 50, 55, 60, 65, 70, 75, 80, 85, 90, 95, 100
IA	Stahl	SW 8	M 5	8, 10, 12, 15, 18, 20, 30, 35, 40, 45, 50, 55, 60, 65, 70, 75, 80, 85, 90, 95, 100
IA	Stahl	SW 10	M 6	10, 12, 15, 18, 20, 30, 35, 40, 45, 50, 55, 60, 65, 70, 75, 80, 85, 90, 95, 100
IA	Stahl	SW 13	M 8	15, 20, 30, 35, 40, 45, 50, 60, 70, 80, 90, 100

Werkstoff – 9SMnPb28K / Mindestzugfestigkeit – 500 N/mm² / Oberflächenbehandlung verzinkt
Sonderausführungen auf Anfrage

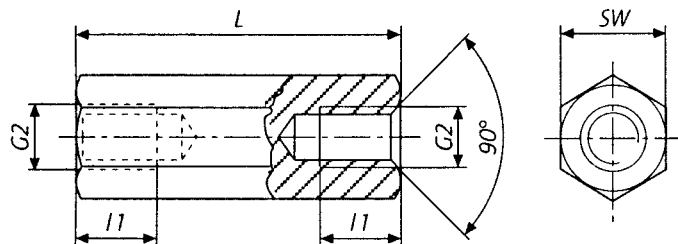
ABSTANDSBOLZEN

DISTANCE BOLT / VISSERIES

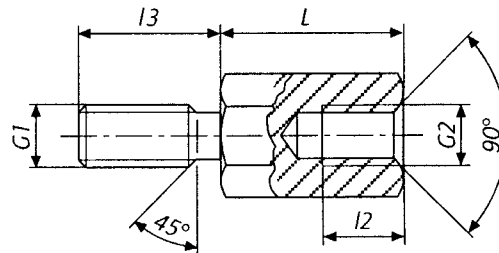
Abstandsbolzen / distance bolt / visseries

Werkstoff: Messing, vernickelt

II Innen-/ Innengewinde



IA Innen-/ Außengewinde



L (mm)	I1 (mm)	I2 (mm)		G1 = G2	I3 (mm)
5	L	3		M 2	5
8	L	5		M 2,5	6
10	L	6	Maße in () für SW 4	M 3	6 + 8
12	L (6)	7 (6)	mit Gewinde M 2	M 4	8
15	L (6)	10 (6)		M 5	8
18	9 (6)	10 (6)	Fertigungstoleranz	M 6	10
ab 20	10 (6)	10 (6)	+/-0,1 mm	4 – 40 UNC	6 + 8 + 12

Ausführung	Material	SW (6-kant)	Gewinde	Standardlängen in mm
II	Messing	SW 4	M 2	5, 6, 8, 10, 12, 15, 18, 20, 30, 35, 40, 45, 50
II	Messing	SW 4	M 2,5	5, 6, 8, 10, 12, 15, 18, 20, 30, 35, 40, 45, 50
II	Messing	SW 5	M 2,5	5, 6, 8, 10, 12, 15, 18, 20, 30, 35, 40, 45, 50, 55, 60
II	Messing	SW 5	M 3	5, 6, 8, 10, 12, 15, 18, 20, 30, 35, 40, 45, 50, 55, 60
II	Messing	SW 5,5	M 3	5, 6, 8, 10, 12, 15, 18, 20, 30, 35, 40, 45, 50, 55, 60, 65, 70
II	Messing	SW 7	M 4	5, 6, 8, 10, 12, 15, 18, 20, 30, 35, 40, 45, 50, 55, 60, 65, 70, 75, 80, 85, 90, 95, 100
II	Messing	SW 8	M 5	8, 10, 12, 15, 18, 20, 30, 35, 40, 45, 50, 55, 60, 65, 70, 75, 80, 85, 90, 95, 100
II	Messing	SW 10	M 6	10, 12, 15, 18, 20, 30, 35, 40, 45, 50, 55, 60, 65, 70, 75, 80, 85, 90, 95, 100
II	Messing	SW 5	4 – 40 UNC	5, 6, 8, 10, 12, 15

Ausführung	Material	SW (6-kant)	Gewinde	Standardlängen in mm
IA	Messing	SW 4	M 2	5, 6, 8, 10, 12, 15, 18, 20, 30, 35, 40, 45, 50
IA	Messing	SW 4	M 2,5	5, 6, 8, 10, 12, 15, 18, 20, 30, 35, 40, 45, 50
IA	Messing	SW 5	M 2,5	5, 6, 8, 10, 12, 15, 18, 20, 30, 35, 40, 45, 50, 55, 60
IA	Messing	SW 5	M 3	5, 6, 8, 10, 12, 15, 18, 20, 30, 35, 40, 45, 50, 55, 60
IA	Messing	SW 5,5	M 3	5, 6, 8, 10, 12, 15, 18, 20, 30, 35, 40, 45, 50, 55, 60, 65, 70
IA	Messing	SW 7	M 4	5, 6, 8, 10, 12, 15, 18, 20, 30, 35, 40, 45, 50, 55, 60, 65, 70, 75, 80, 85, 90, 95, 100
IA	Messing	SW 8	M 5	8, 10, 12, 15, 18, 20, 30, 35, 40, 45, 50, 55, 60, 65, 70, 75, 80, 85, 90, 95, 100
IA	Messing	SW 10	M 6	10, 12, 15, 18, 20, 30, 35, 40, 45, 50, 55, 60, 65, 70, 75, 80, 85, 90, 95, 100
IA	Messing	SW 5	4 – 40 UNC	5, 6
IA	Messing	SW 5	4 – 40 UNC/M3	5, 6

Werkstoff – CuZn39Pb3 / Mindestzugfestigkeit – 430 N/mm² / Oberflächenbehandlung vernickelt
Sonderausführungen auf Anfrage!